

VIBRO-KING TL[®]

SCREEN

Incline Screen



Screen Features

- 1/2" (no weld) sideplates (alternate 3/8")
- 20 degree mount angle
- Huck-bolted assembly
- Reinforcing plates at vibrator
- Bolt on AR lined feedbox, 6" AR lined discharge lips
- Backplate with rubber dust curtain
- Support pedestals and springs
- Lifting bars
- Steel coil springs
- Urethane friction checks with replaceable wear plates
- Applications from heavy duty scalping to finish screening (wet or dry)
- Standard wide series bearings deliver long service life: bearing sizes: TL26 (130mm bearings), TL32 (160mm bearings)
- Oil lubricated TL shaft assembly (single and dual shaft models)
 - o Oversized shaft casing increases oil volume & extends service intervals
- "Never-Wear" sealing system:
 - o Centrifugal force casts oil away
 - o No contact seals to maintain
- Urethane labyrinth dust seal
- Best in-class serviceability
 - o Splash plate to support shaft during assembly
 - o Oil level sight gauge on non-drive side
 - o Grease fittings located outside of guard
- External counterweights
- FEA design with extensive stress analysis
- Operation and maintenance manuals

Deck Designs

- Side tension deck:
 - o Designed for wire cloth (up to 1/2" dia. wire)
 - o 5' & 6' wide screens utilize single crown hook up / hook up design
 - o 7' & 8' wide screens utilize double crown hook up / hook down design
- Modular urethane deck:
 - o Designed for mounting urethane panels of almost any style.
 - o Fabricated with heavy J-Beams welded into formed channel side
- Heavy duty J-Beam deck:
 - o Designed for mounting bolt-down punch plate or steel-backed rubber media

Optional Equipment

- Spray pipe assembly including spray bars with nozzles, spray bar supports and side plate hole covers for triple/double deck screen
- Bolt-in 2" rubber feedbox and discharge lip liners
- Bolt-on side plate extensions to add 10"
- J-Bolt hold downs for wire cloth diameters 7/16"
- Top deck heavy duty grizzly bar
- Heavy duty flat screen support frame(s)
- Modular media screen support frame(s)
- Bolt-in rubber support frame liners for screen deck cross beams
- Blank screen support frame in lieu of standard crowned support frame
- Standard wire cloth
- Spring guards – rubber wrap around
- V-belt drive and guards
- Pivotal motor base
- Electric motor(s)

| Feature | Specifications |
|--|---|
| Adjustable stroke length (throw)* | Minimum 1/4" to 7/16" |
| Adjustable operating speed range | 780 – 1050 RPM |
| Slope Range | 14° - 20° |
| Maximum feed size** | 10"-18" |
| Maximum top deck opening | 3" (wire cloth), / 6" (punch plate) |
| Minimum screen cloth opening | 6 mesh – 3/32" |
| Sideplate thickness | 5' & 6' – 3/8" *** / 7' & 8' – 1/2" |
| Reinforcing plate thickness | 3/8" (3/8" sideplate) / 1/4" (1/2" sideplate) |
| Feed box liner thickness (AR400 Plate) | 3/8" |
| Discharge lip length | 6" |
| Discharge lip liner (AR400) thickness | 3/8" |

* For dry 100lb per cubic foot material and shaft rotating with the flow

** Maximum feed size will vary based on deck design, media selection, and feed height

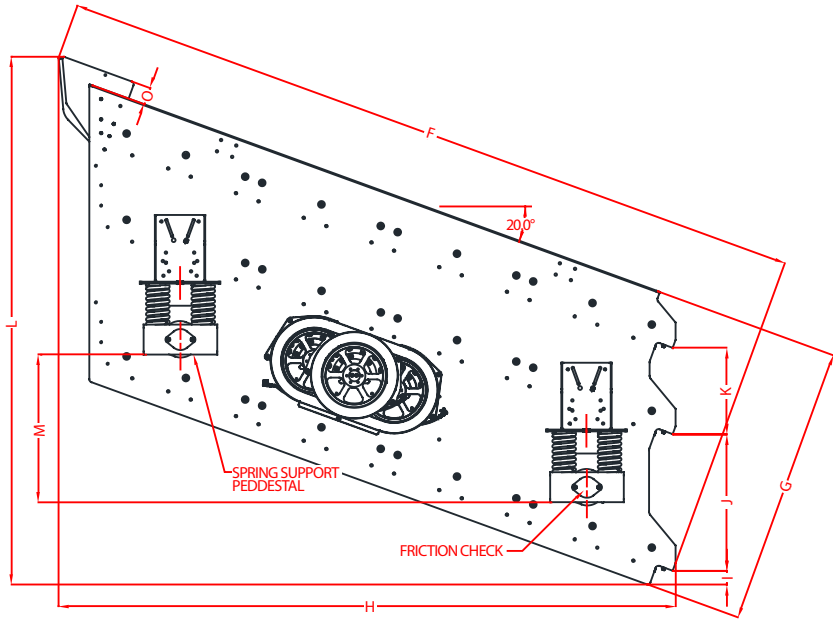
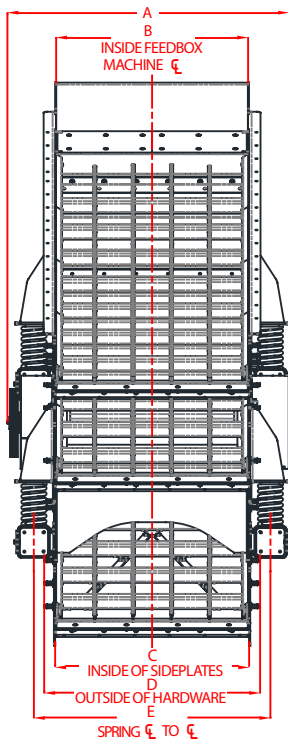
*** Plate thickness based on duty and application

Physical and Operating Characteristics

| | Power Required | | | | Weight* | | Bearing Size Per Shaft | | | | Oil Capacity Per Shaft | | | | Support Frame** |
|---------|----------------|-------|------------------------|-------|---------|--------|------------------------|------|-----------|-----------|------------------------|--------|------|--------|---------------------------|
| | Single Shaft | | Dual Shaft (HP/kW x 2) | | | | TL26 | TL32 | Dual TL26 | Dual TL32 | TL26 | | TL32 | | Side Tension (Wire Cloth) |
| | TL26 | TL32 | TL26 | TL32 | | | | | | | gal. | liters | gal. | liters | |
| Model | HP/kW | HP/kW | HP/kW | HP/kW | lb | kg | mm | mm | mm | mm | gal. | liters | gal. | liters | Single Crown |
| 5x16 DD | 25/19 | -/- | -/- | -/- | 13,455 | 6,103 | 130 | - | - | - | 4.3 | 16.3 | 4.4 | 16.7 | Single Crown |
| 5x16 TD | 30/23 | -/- | -/- | -/- | 17,009 | 7,715 | 130 | - | - | - | 4.3 | 16.3 | 4.4 | 16.7 | Single Crown |
| 6x16 DD | 25/19 | 30/23 | 20/15 | -/- | 14,863 | 6,742 | 130 | 160 | 130 | - | 5.2 | 19.7 | 5.3 | 20.1 | Single Crown |
| 6x16 TD | 30/23 | 40/30 | 20/15 | -/- | 19,573 | 8,878 | 130 | 160 | 130 | - | 5.2 | 19.7 | 5.3 | 20.1 | Single Crown |
| 6x16 QD | -/- | 40/30 | 30/40 | 23/30 | 22,848 | 10,364 | - | 160 | 130 | 160 | 5.2 | 19.7 | 5.3 | 20.1 | Single Crown |
| 6x20 DD | 30/23 | 40/30 | 20/20 | 15/15 | 17,439 | 7,910 | 130 | 160 | 130 | 160 | 5.2 | 19.7 | 5.3 | 20.1 | Single Crown |
| 6x20 TD | -/- | 40/30 | 25/25 | 19/19 | 22,728 | 10,309 | - | 160 | 130 | 160 | 5.2 | 19.7 | 5.3 | 20.1 | Single Crown |
| 6x20 QD | -/- | 40/30 | 30/23 | 40/30 | 29,220 | 13,254 | - | 160 | 130 | 160 | 5.2 | 19.7 | 5.3 | 20.1 | Single Crown |
| 7x20 DD | -/- | 40/30 | 20/15 | 25/19 | 23,598 | 10,704 | - | 160 | 130 | 160 | 6 | 22.7 | 6.1 | 23.1 | Double Crown |
| 7x20 TD | -/- | 40/30 | 25/19 | 30/23 | 30,574 | 16,868 | - | 160 | 130 | 160 | 6 | 22.7 | 6.1 | 23.1 | Double Crown |
| 8x20 DD | -/- | 40/30 | 25/19 | 25/19 | 25,056 | 11,365 | - | 160 | 130 | 160 | 6.9 | 26.1 | 7 | 26.5 | Double Crown |
| 8x20 TD | -/- | -/- | 30/23 | 30/23 | 33,166 | 15,044 | - | - | 130 | 160 | 6.9 | 26.1 | 7 | 26.5 | Double Crown |
| 8x20 QD | -/- | -/- | 30/23 | 40/30 | 38,311 | 17,378 | - | - | 130 | 160 | 6.9 | 26.1 | 7 | 26.5 | Double Crown |
| 8x24 DD | -/- | -/- | 25/19 | 30/23 | 28,102 | 12,747 | - | - | 130 | 160 | 6.9 | 26.1 | 7 | 26.5 | Double Crown |
| 8x24 TD | -/- | -/- | -/- | 40/30 | 36,861 | 16,720 | - | - | - | 160 | 6.9 | 26.1 | 7 | 26.5 | Double Crown |
| 8x24 QD | -/- | -/- | -/- | 40/30 | 49,855 | 24,152 | - | - | - | 160 | 6.9 | 26.1 | 7 | 26.5 | Double Crown |

*Weights are approximate and include wire cloth. All weights shown are estimated and may vary due to fabrication variables, optional equipment or custom engineering. Consult factory for additional quad deck models. **Additional support frames available. Modular Urethane Deck & Heavy Duty J-Beam Deck.

Screen Dimensions



| Size | A mm [in] | B mm [in] | C mm [in] | D mm [in] | E mm [in] | F mm [in] | G mm [in] | H mm [in] | I mm [in] | J mm [in] | K mm [in] | L mm [in] | M mm [in] | O mm [in] |
|---------|------------------|----------------|----------------|-----------------|-----------------|-----------------|----------------|-----------------|--------------|----------------|---------------|-----------------|----------------|--------------|
| 5x16 DD | 2338.8 [92.08] | 1524.0 [60.00] | 1539.9 [60.63] | 1713.6 [67.46] | 1876.4 [73.87] | 6113.3 [240.68] | 1675.6 [65.97] | 5215.8 [205.35] | 115.3 [4.54] | 1155.3 [45.48] | - | 3730.3 [146.86] | 1251.0 [49.25] | 144.6 [5.69] |
| 5x16 TD | 2338.8 [92.08] | 1524.0 [60.00] | 1539.9 [60.63] | 1713.6 [67.46] | 1876.4 [73.87] | 6362.9 [250.51] | 2361.3 [92.96] | 5215.8 [205.35] | 115.3 [4.54] | 1155.3 [45.48] | 729.7 [26.73] | 4460.0 [175.59] | 1251.0 [49.25] | 144.6 [5.69] |
| 6x16 DD | 2653.7 [104.08] | 1828.8 [72.00] | 1844.7 [72.63] | 2018.4 [79.46] | 2181.2 [85.87] | 6113.3 [240.68] | 1675.6 [65.97] | 5215.8 [205.35] | 115.3 [4.54] | 1155.3 [45.48] | - | 3730.3 [146.86] | 1251.0 [49.25] | 144.6 [5.69] |
| 6x16 TD | 2653.7 [104.08] | 1828.8 [72.00] | 1844.7 [72.63] | 2018.4 [79.46] | 2181.2 [85.87] | 6362.9 [250.51] | 2361.3 [92.96] | 5215.8 [205.35] | 115.3 [4.54] | 1155.3 [45.48] | 729.7 [26.73] | 4460.0 [175.59] | 1251.0 [49.25] | 144.6 [5.69] |
| 6x20 DD | 2653.7 [104.08] | 1828.8 [72.00] | 1844.7 [72.63] | 2024.8 [79.71] | 2181.2 [85.87] | 7332.5 [288.68] | 1677.8 [66.06] | 6361.5 [250.45] | 115.3 [4.54] | 1155.3 [45.48] | - | 4147.3 [163.28] | 1668.0 [65.67] | 144.6 [5.69] |
| 6x20 TD | 2653.7 [104.08] | 1828.8 [72.00] | 1844.7 [72.63] | 2024.8 [79.71] | 2181.2 [85.87] | 7582.1 [298.51] | 2363.4 [93.05] | 6361.5 [250.45] | 115.3 [4.54] | 1155.3 [45.48] | 729.7 [26.73] | 4877.0 [192.01] | 1668.0 [65.67] | 144.6 [5.69] |
| 7x20 DD | 2948.4 [116.08] | 2133.6 [84.00] | 2149.5 [84.63] | 2335.9 [91.96] | 2486.0 [97.87] | 7332.5 [288.68] | 1677.8 [66.06] | 6361.5 [250.45] | 115.3 [4.54] | 1155.3 [45.48] | - | 4147.3 [163.28] | 1668.0 [65.67] | 144.6 [5.69] |
| 7x20 TD | 2948.4 [116.08] | 2133.6 [84.00] | 2149.5 [84.63] | 2335.9 [91.96] | 2486.0 [97.87] | 7582.1 [298.51] | 2363.4 [93.05] | 6361.5 [250.45] | 115.3 [4.54] | 1155.3 [45.48] | 729.7 [26.73] | 4877.0 [192.01] | 1668.0 [65.67] | 144.6 [5.69] |
| 8x20 DD | 3253.23 [128.08] | 2438.4 [96.00] | 2454.3 [96.63] | 2647.1 [104.21] | 2790.8 [109.87] | 7322.5 [288.29] | 1677.8 [66.06] | 6361.5 [250.45] | 115.3 [4.54] | 1155.3 [45.48] | - | 4147.3 [163.28] | 1668.0 [65.67] | 144.6 [5.69] |
| 8x20 TD | 3253.23 [128.08] | 2438.4 [96.00] | 2454.3 [96.63] | 2647.1 [104.21] | 2790.8 [109.87] | 7582.1 [298.51] | 2363.4 [93.05] | 6361.5 [250.45] | 115.3 [4.54] | 1155.3 [45.48] | 729.7 [26.73] | 4877.0 [192.01] | 1668.0 [65.67] | 144.6 [5.69] |
| 8x24 DD | 3253.23 [128.08] | 2438.4 [96.00] | 2454.3 [96.63] | 2653.4 [104.46] | 2790.8 [109.87] | 8551.7 [336.68] | 1677.8 [66.06] | 7507.2 [295.56] | 115.3 [4.54] | 1155.3 [45.48] | - | 4564.3 [179.70] | 2085.0 [82.09] | 144.6 [5.69] |
| 8x24 TD | 3253.23 [128.08] | 2438.4 [96.00] | 2454.3 [96.63] | 2653.4 [104.46] | 2790.8 [109.87] | 8801.3 [346.51] | 2363.4 [93.05] | 7507.2 [295.56] | 115.3 [4.54] | 1155.3 [45.48] | 729.7 [26.73] | 5294.0 [208.43] | 2085.0 [82.09] | 144.6 [5.69] |

*Right hand drive shown. Speed and stroke based on media openings at time of sale, machine weight and vibrator configuration dependent on application and media selection. **The throw, speed, slope and screening surfaces of vibrating screens are established by the factory for each application.