

# Telsmith H3450 Hydra-Jaw™

## Telsmith H3450 with Hydra-Jaw™ Technology complete with:

- Cast steel swing jaw
- Interchangeable swing and stationary jaw dies
- 864 mm [34 in] gap
- 1270 mm [50 in] width
- Bolt-in abrasion-resistant frame liners
- Spherical roller bearings
- 1450 mm [57.09 in] diameter flywheels
- Hydraulic adjustment and relief toggle cylinder
- Spring tensioned toggle system
- Grease lube

## Hydraulic Power Unit Including:

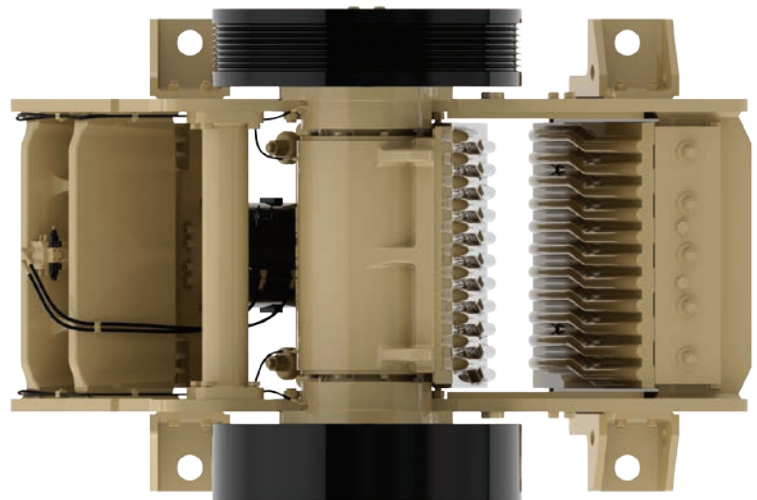
- 5.5 kW [7.5 HP] motor
- 75 L [20 gal]

## Automation Package:

- Universal crusher control panel

## Optional Equipment:

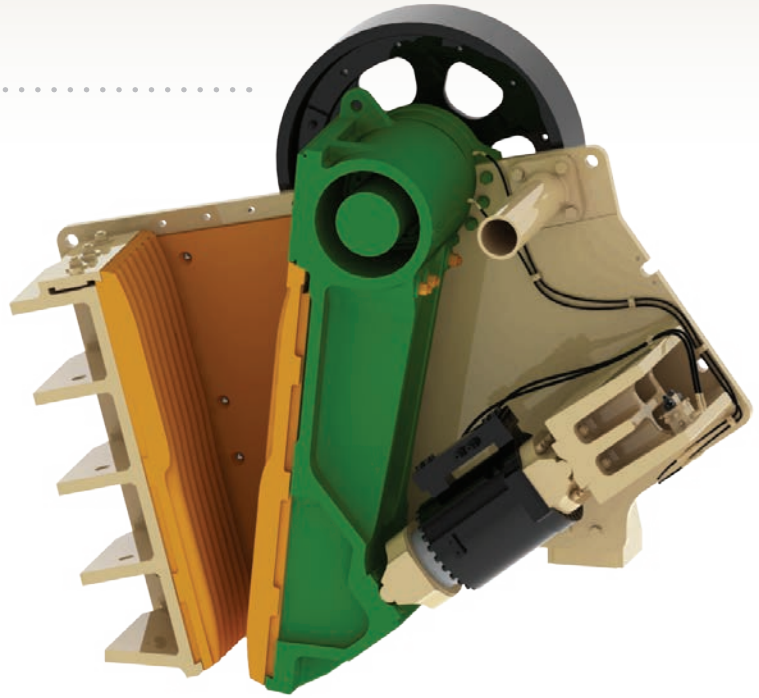
- 147 kW [200 HP] crusher duty electric motor
- Slide rails for crusher drive motor
- V-belt drive
- V-belt drive guard
- Receiving hopper
- Integral drive with flywheel guards
- Oil heater
- Auto grease



# H3450 Hydra-Jaw™

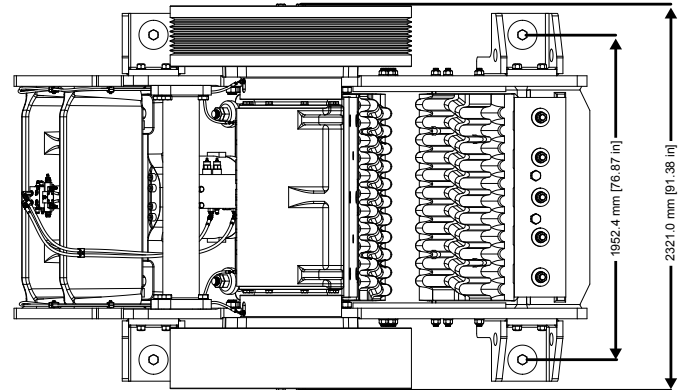
## H3450 General Specifications

	Metric	US
Jaw Opening	864 mm x 1270 mm	34 in x 50 in
Recommended Motor	147 kW	200 HP
Recommended Crusher RPM	260 RPM	260 RPM
Lubrication (Standard)	Grease – with lines routed to central distribution point	
Lubrication (Optional)	Automatic grease system	
Miscellaneous Hardware	All bolts and hardware are metric standard	
Hydraulic System (Tank Capacity)	75 liters	20 gallons
Hydraulic System (Motor)	5.5 kW	7.5 HP



## H3450 Weights

Complete Crusher	27825 kg	61,345 lbs
Main Frame Assembly	10548 kg	23,255 lbs
Swing Jaw Assembly (excluding flywheels)	7746 kg	17,076 lbs
Flywheel	1352 kg	2,982 lbs
Jaw Die	2204 kg	4,859 lbs
Toggle Cylinder Assembly	1629 kg	3,592 lbs



## Crushing Capacities

